

SIEMENS

Starter Size 00 - 4

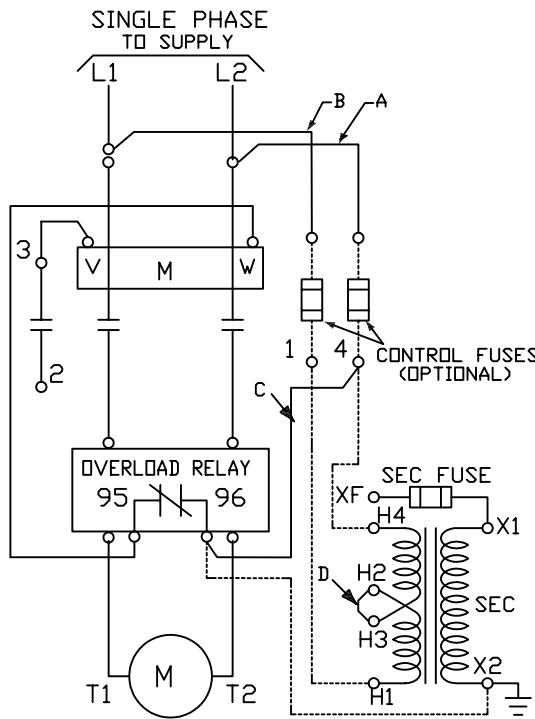
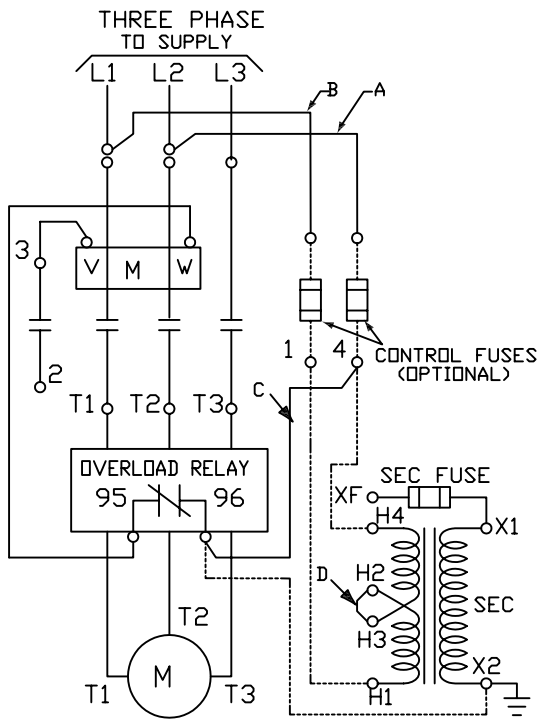
CLASS 14 MAGNETIC STARTER

(USE COPPER WIRE ONLY)

Inspected

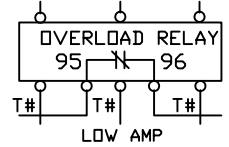
Series C

CAT.
NO.

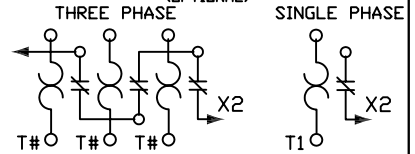


OVERLOAD RELAY SHOWN IS FOR THE THE SOLID STATE WINDOW TYPE. ALTERNATIVE CONNECTIONS ARE SHOWN BELOW.

SOLID-STATE THREE PHASE (STANDARD)



AMBIENT COMPENSATED BIMETAL (OPTIONAL)



FIELD MODIFICATION KITS

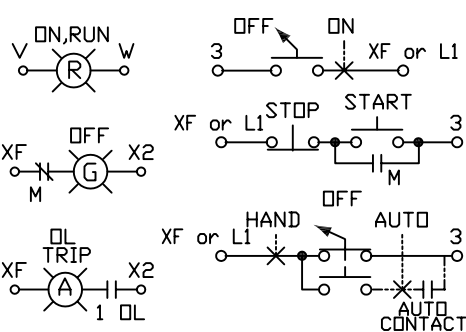
DESCRIPTION	CAT. NO.
HAND OFF AUTO SELECTOR SWITCH	49SBSB1
OFF ON SELECTOR SWITCH	49SBSB4
START STOP PUSH BUTTON	49SBPB5
PILOT LIGHT 120 VAC	49SBLBF
PILOT LIGHT 208,240,277 VAC	49SBLBG
PILOT LIGHT 480 VAC	49SBLBH
PILOT LIGHT 600 VAC	49SBLBE
PILOT LIGHT 24 VAC	49SBLBJ

POWER TERMINAL WIRING

SIZE	TORQUE (Lb-in.)	WIRE (Cu only)
0	20	60/75°C
1	35	60/75°C
2	45	60/75°C
3	120	75°C
4	200	75°C

GROUND LUG KIT	
GROUND WIRE RANGE	KIT NUMBER
2-14 AL-CU	49D28179001
3 CONDUCTOR	49D28180001

CONNECTIONS FOR OPTIONAL PILOT DEVICES



NOTES:

- 1) TRANSFORMER CONNECTIONS SHOWN ARE FOR HIGHER PRIMARY VOLTAGE. FOR LOWER VOLTAGE, REMOVE JUMPER 'D' AND CONNECT 'H1' TO 'H3' AND 'H2' TO 'H4' ON TRANSFORMER. FOR CONNECTIONS OTHER THAN SHOWN, SEE TRANSFORMER NAMEPLATE.
- 2) FOR SEPARATE CONTROL VOLTAGE SOURCE, REMOVE JUMPERS 'A' AND 'B' AND CONNECT SOURCE TO CONTROL FUSE LINE TERMINALS.
- 3) WHEN FIELD ADDING A TRANSFORMER OR CHANGING TO A SEPERATE SOURCE, CHECK COIL VOLTAGE FOR COMPATIBILITY AND CHANGE COIL OR RECONNECT JUMPER IF NECESSARY.
- 4) REMOVE JUMPER 'C' IF CONTROL TRANSFORMER IS USED.

MAXIMUM CURRENT RATING FOR THERMAL MAGNETIC BREAKERS IS 250 % OF MAXIMUM MOTOR F.L.A. MAXIMUM CURRENT RATING OF FUSES IS:

- A. 150% OF MAXIMUM MOTOR F.L.A. FOR CLASS R,H,K OR L (TIME DELAY)
- B. 250% OF MAXIMUM MOTOR F.L.A. FOR CLASS H,K OR L (NON-TIME DELAY)
- C. 300% OF MAXIMUM MOTOR F.L.A. FOR CLASS J (NON-TIME DELAY)

IF THE CALCULATED RATING IS BETWEEN STANDARD SIZES, THE NEXT LARGER SIZE MAY BE USED. FOR PROTECTION OF CONTROL CIRCUIT CONDUCTORS IN ACCORDANCE WITH THE N.E.C. AND C.E.C. USE FUSE KIT 49MAFH2.