

ODD FELLOWS SIERRA PARK
STAND MANAGEMENT HISTORY

The timber stands of Odd Fellows Sierra Park have been subject to timber harvesting activities since before the turn of the century.

Judging from increment borings of the largest trees in the stand, it appears that the area was subject to a rather thorough harvest in the 1870's which was instrumental in establishment of the older age class currently found in the stands. The next substantial entries appear to have been in the late 1940's, and these entries were instrumental in establishing much of what is now the middle age class of current stands. Following this period, the subdivision that now exists was established and timber management became subordinate to development of recreational uses in the "greenbelt area" surrounding the subdivision.

The most recent series of harvest entries began in 1980, when a Timber Management Plan was developed for the Park. The following table (Table 1) shows each harvest entry (sale) name, the type of each operation, the acreage of each operation, and it's date of conduct since the Park came under structured timber management in 1980. Table 2 shows the net volume removed, by species, for the same operations shown in Table 1.

Table 1

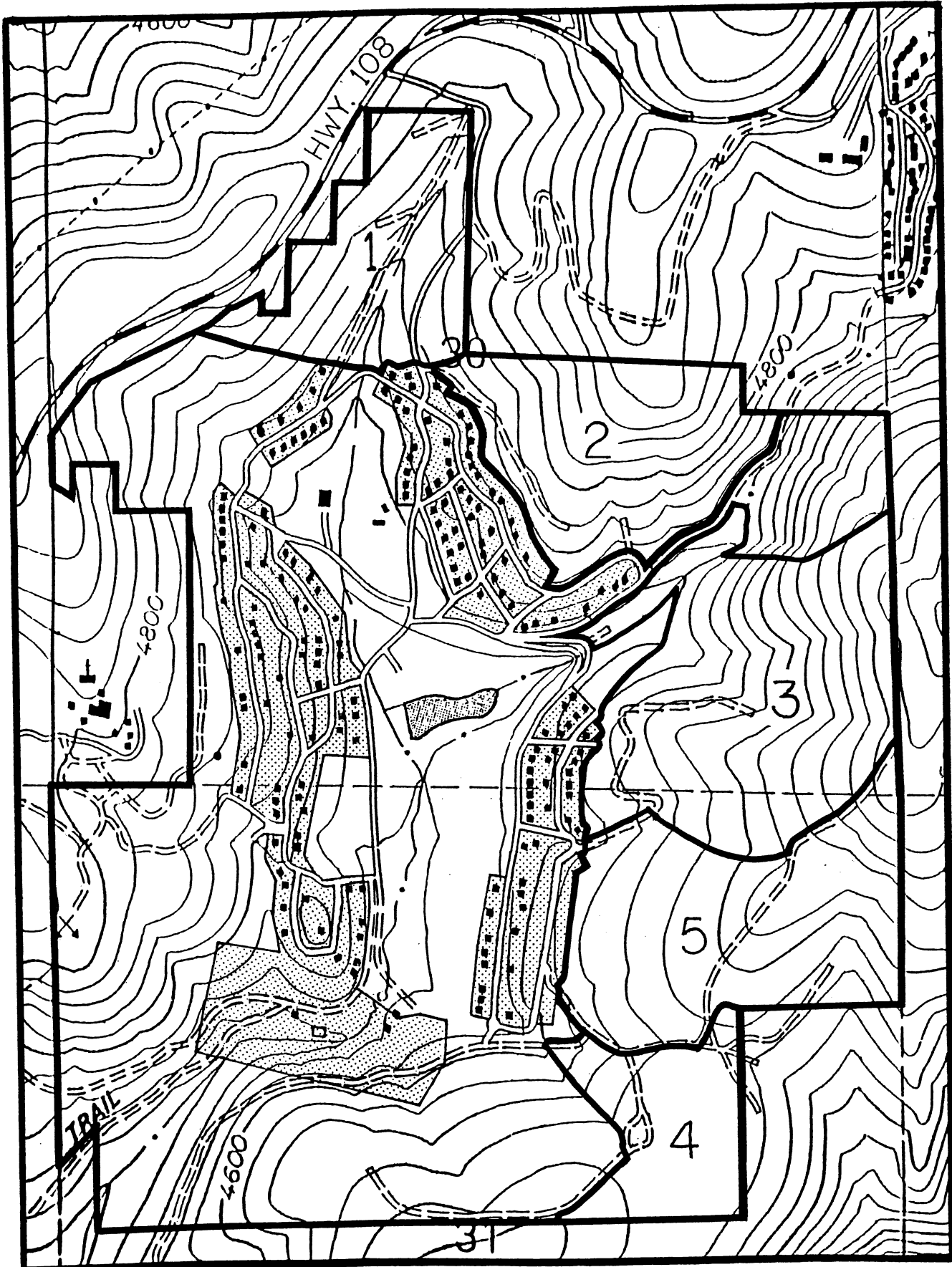
<u>Sale Name</u>	<u>Type of Operation</u>	<u>Acreage</u>	<u>Year Conducted</u>
Odd Fellows #1	Green sale (selection)	31	1980
Odd Fellows #2	Green sale (selection)	50	1983
Odd Fellows #3	Green sale (selection)	69	1984
Odd Fellows #4	Green sale (selection)	23	1986
Odd Fellows #5	Green sale (selection)	47	1987
Rodriguez Salvage 1	Salvage sale	8*	1988
Carne Salvage	Salvage sale	213*	1989
Rodriguez Salvage 2	Salvage sale	27*	1991
Scott Salvage	Salvage sale	640*	1993

* Acreages listed for salvage sales reflect operations considerably more dispersed and less intensive than those for green sales. Acreages listed are "gross" acreage as listed on Emergency Notices or Exemptions, and actual "net" acreage where cutting actually took place was, in most instances, substantially less.

Table 2 (All volumes are expressed in thousands of board feet)

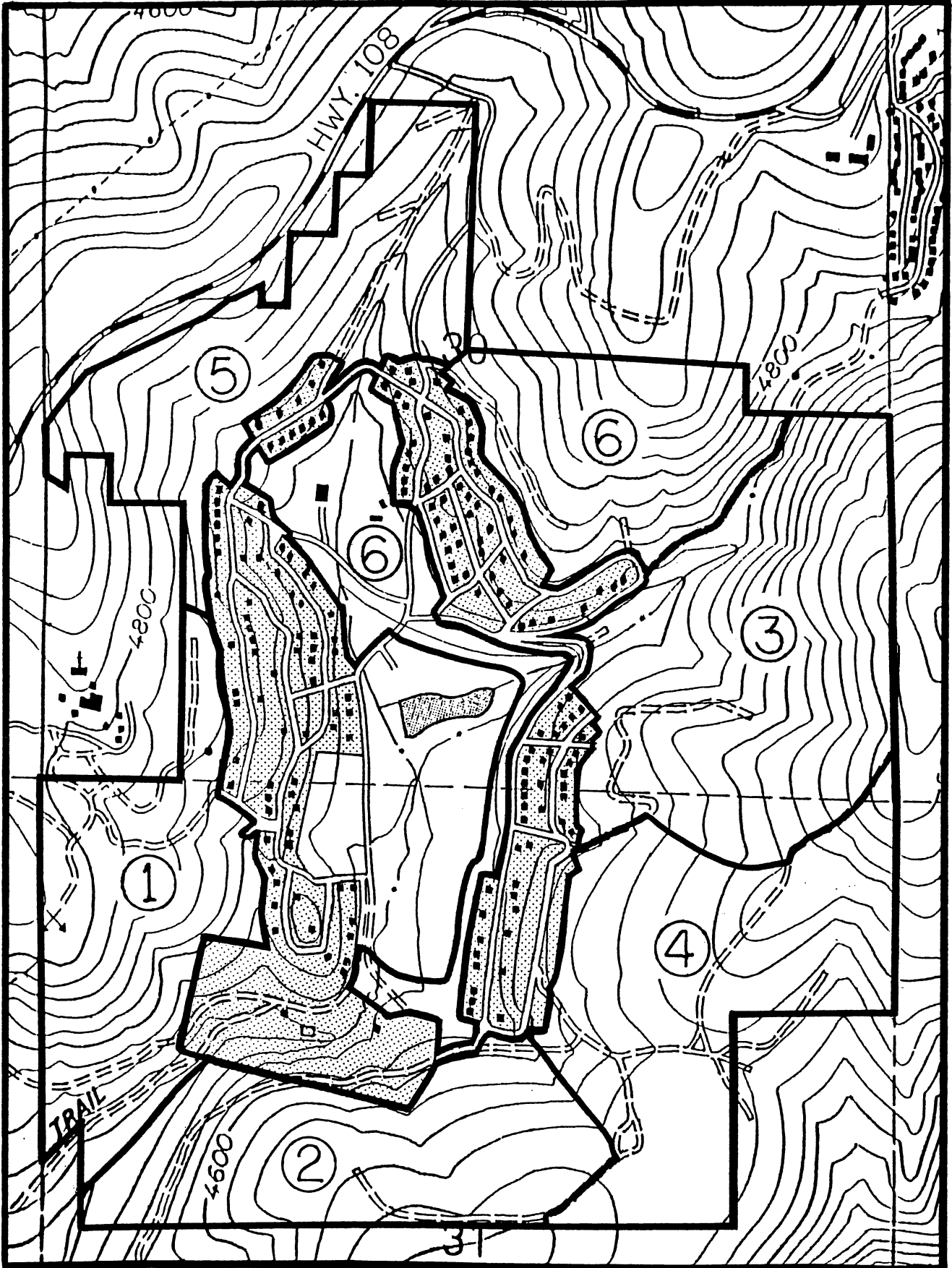
<u>Sale Name</u>	<u>PP</u>	<u>SP</u>	<u>WF</u>	<u>DF</u>	<u>IC</u>	<u>TOTAL</u>
Odd Fellows #1	210	51	14	0	27	302
Odd Fellows #2	252	73	13	1	44	383
Odd Fellows #3	170	81	103	29	81	464
Odd Fellows #4	226	28	46	6	25	331
Odd Fellows #5	300	54	44	7	34	439
Rodriguez Salvage 1	24	3	3	0	0	30
Carne Salvage	188	52	525	0	1	766
Rodriguez Salvage 2	94	1	5	0	0	100
Scott Salvage	49	5	15	0	2	71
TOTAL:	1,513	348	768	43	214	2,886

ODD FELLOWS SIERRA PARK
SECTIONS 30 & 31, T.3N., R.17E., MDM
SCALE: 1 inch = 850 feet



NOTE: SHADED PORTIONS WITHIN PROJECT BOUNDARY
ARE NOT THE OWNERSHIP OF ODD FELLOWS SIERRA PARK

ODD FELLOWS SIERRA PARK
SECTIONS 30 & 31, T.3N., R.17E., MDM
SCALE: 1 inch = 850 feet



NOTE: SHADED PORTIONS WITHIN PROJECT BOUNDARY
ARE NOT THE OWNERSHIP OF ODD FELLOWS SIERRA PARK