

091 23

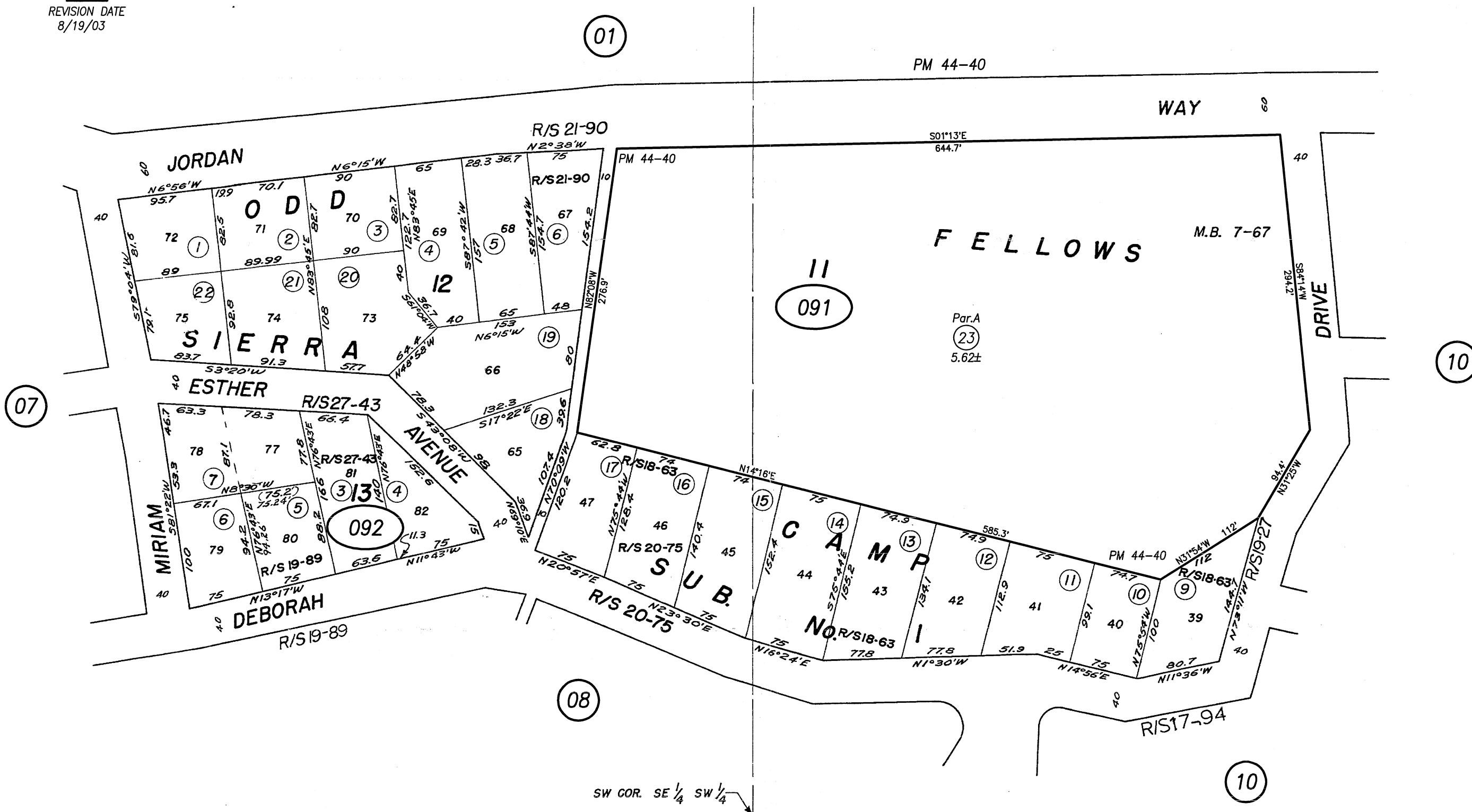
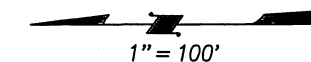
092 7

REVISION DATE  
8/19/03

POR. SEC.30 & 31 T.3 N., R.17 E., M.D.B.&M.

Tax Rate Area  
76-015

31-09



Note: Assessor's Block & Lot Numbers Shown in Circles

Note: This Plat Is For Assessment Pur-  
poses Only And Not An Official Map.  
Copyright ©1998 by Tuol. Co. Assessor