

- 051 13
- 052 35
- 053 11
- 054 3

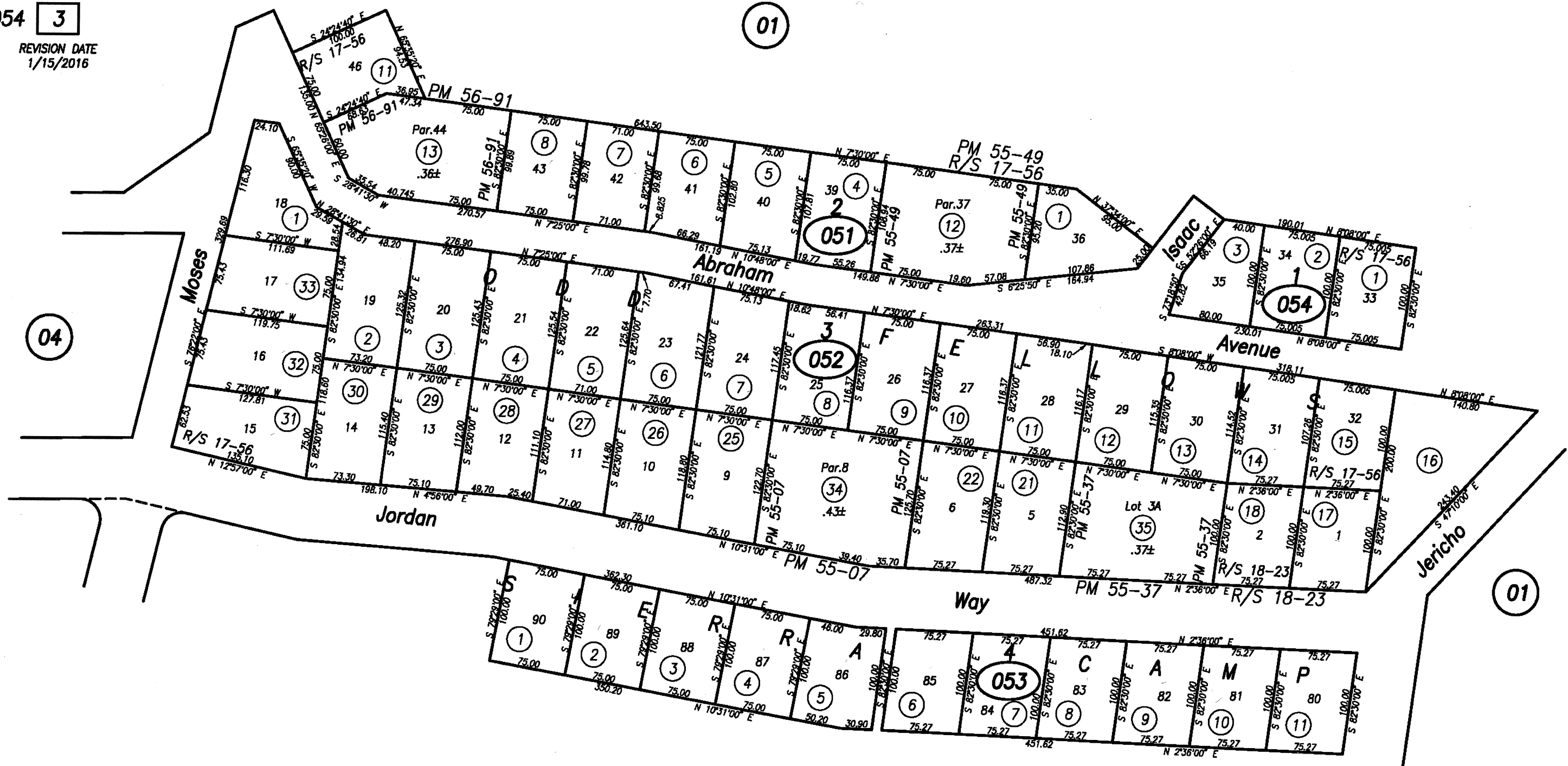
REVISION DATE  
1/15/2016

POR. NE1/4 SEC.31 T.3N., R.17E., M.D.B.&M.

Tax Rate Area  
76-015

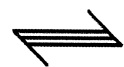
31-05

1" = 100'



Note: Assessor's Block Numbers Shown in Ellipses  
Assessor's Lot Numbers Shown in Circles

Note: This Plat Is For Assessment Purposes  
Only And Not An Official Map.  
Copyright ©1998 by Tuol. Co. Assessor



Symbol connects Assessor Parcels currently  
separated for tax purposes, but makeup a  
single legal parcel.