

031 5

032 12

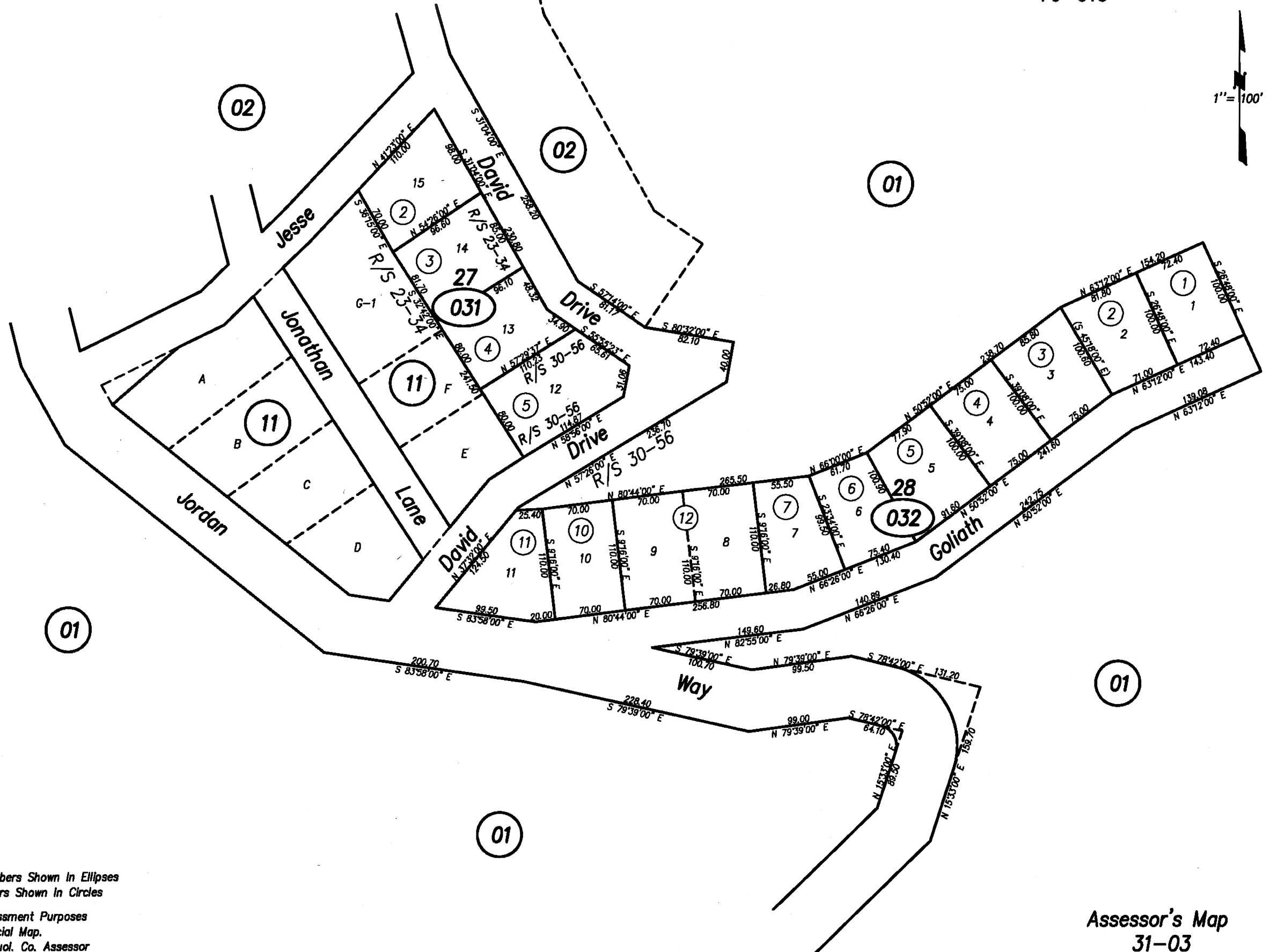
REVISION DATE  
3/10/2014

POR. SE1/4 SEC.30 T.3N., R.17E., M.D.B.&M.

Tax Rate Area  
76-015

31-03

1" = 100'



Note: Assessor's Block Numbers Shown in Ellipses  
Assessor's Lot Numbers Shown in Circles

Note: This Plat Is For Assessment Purposes  
Only And Not An Official Map.  
Copyright ©1998 by Tuol. Co. Assessor

Symbol connects Assessor Parcels currently  
separated for tax purposes, but makeup a  
single legal parcel.