

(Bk.27)

POR. SEC.30 & 31 T.3 N., R.17 E., M.D.B.&M.

Tax Rate Area
76-015

31-01

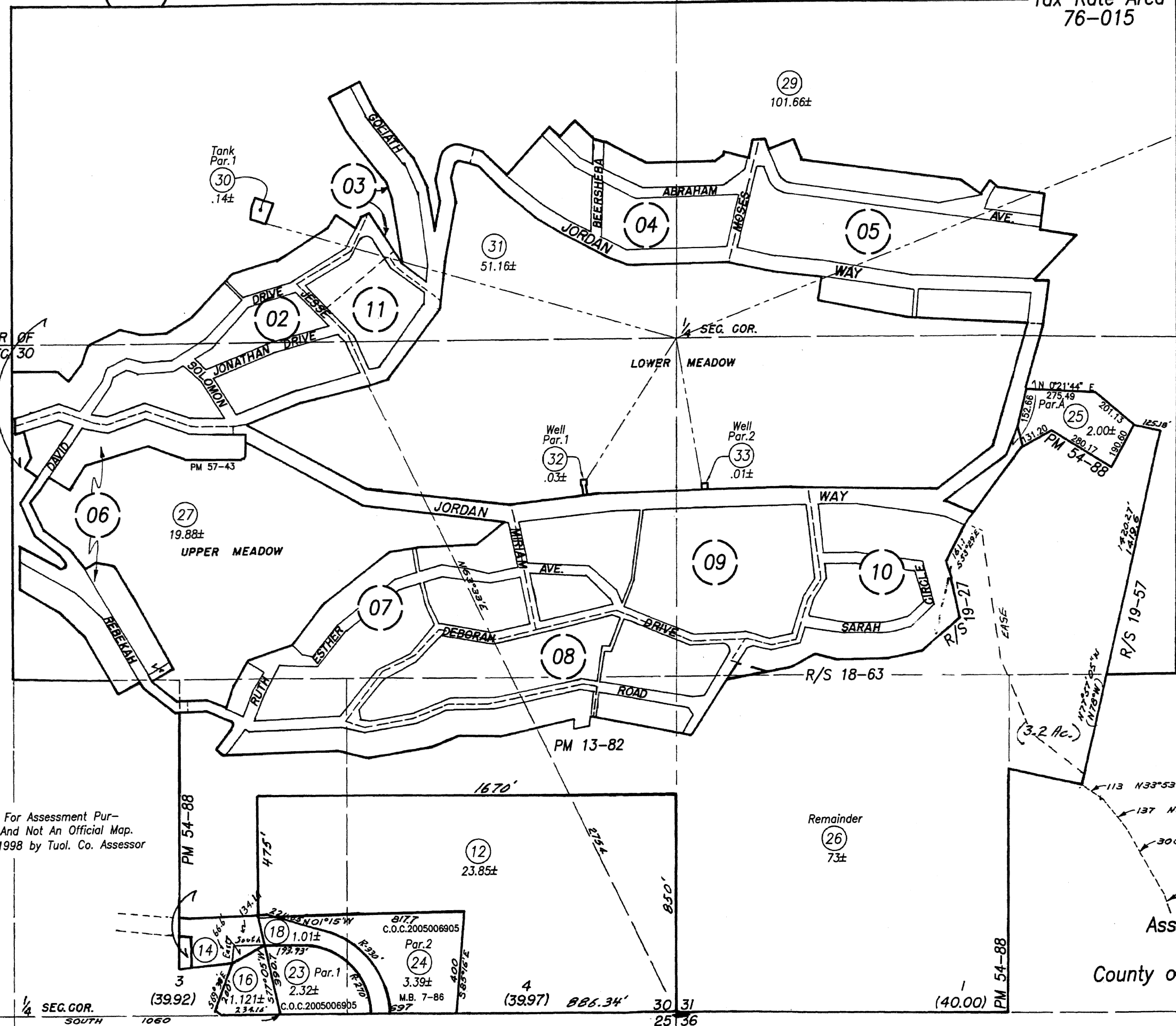
33
REVISION DATE
10/10/2016

1" = 400'

Bk.27

Bk.27

Note: This Plat Is For Assessment Pur-
poses Only And Not An Official Map.
Copyright ©1998 by Tuol. Co. Assessor



Assessor's Map
31-01
County of Tuolumne, Calif.
1949

1/4 SEG. GOR.
SOUTH

1/4 SEG.
GOR.