

(Bk.27)

POR. SEC.30 & 31 T.3 N., R.17 E., M.D.B.&M.

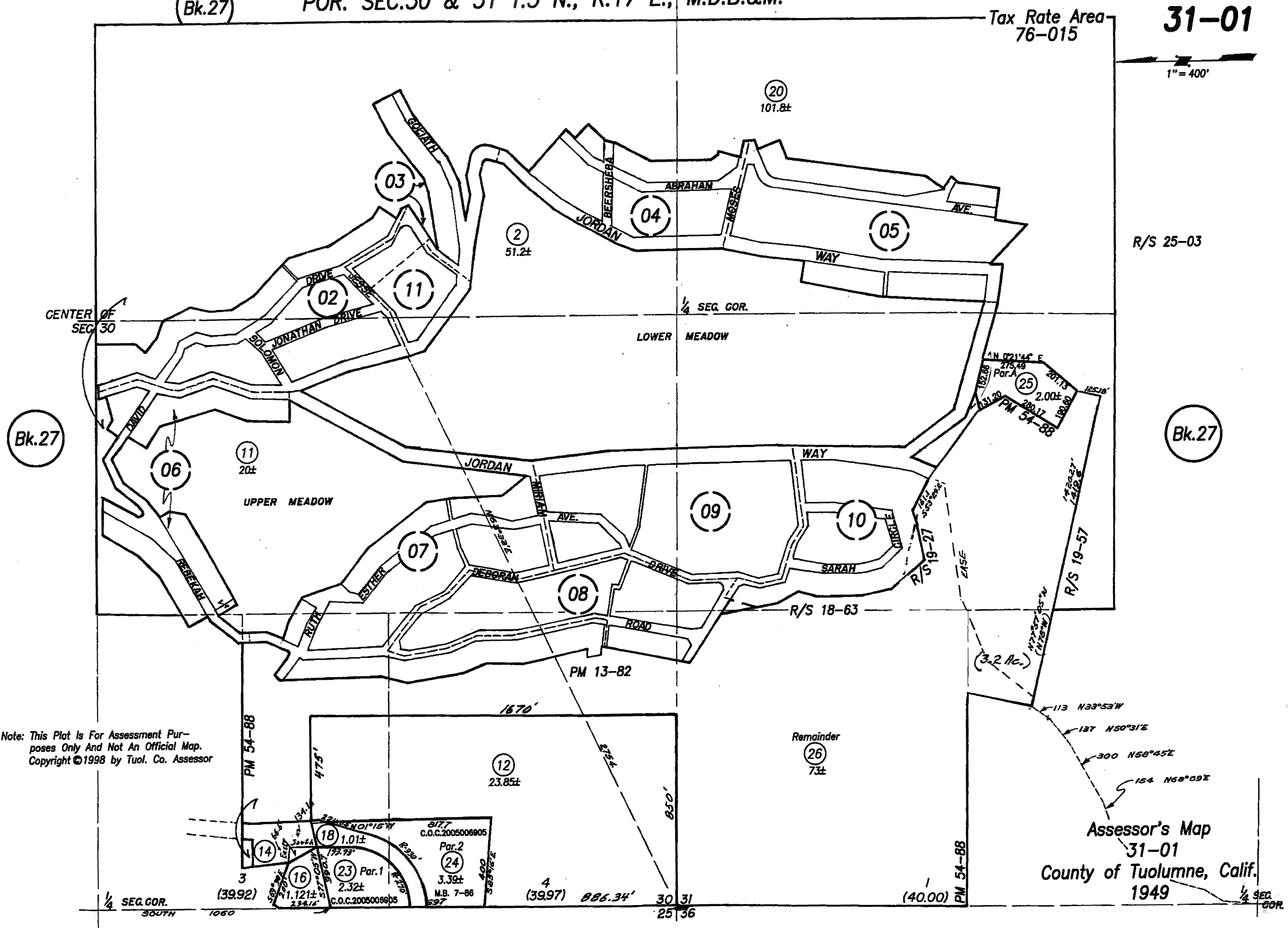
Tax Rate Area
76-015

31-01

1" = 400'

26

REVISION DATE
1/28/2013



Note: This Plat is For Assessment Purposes Only And Not An Official Map.
Copyright ©1998 by Tuolumne Co. Assessor

Assessor's Map
31-01
County of Tuolumne, Calif.
1949