

(Bk.27)

POR. SEC.30 & 31 T.3 N., R.17 E., M.D.B.&M.

Tax Rate Area  
76-015

31-01

1" = 400'

R/S 25-03

Bk.27

R/S 19-57

R/S 18-63

PM 13-82

113 N33°53'W  
137 N50°31'E  
300 N58°45'E  
154 N68°09'E

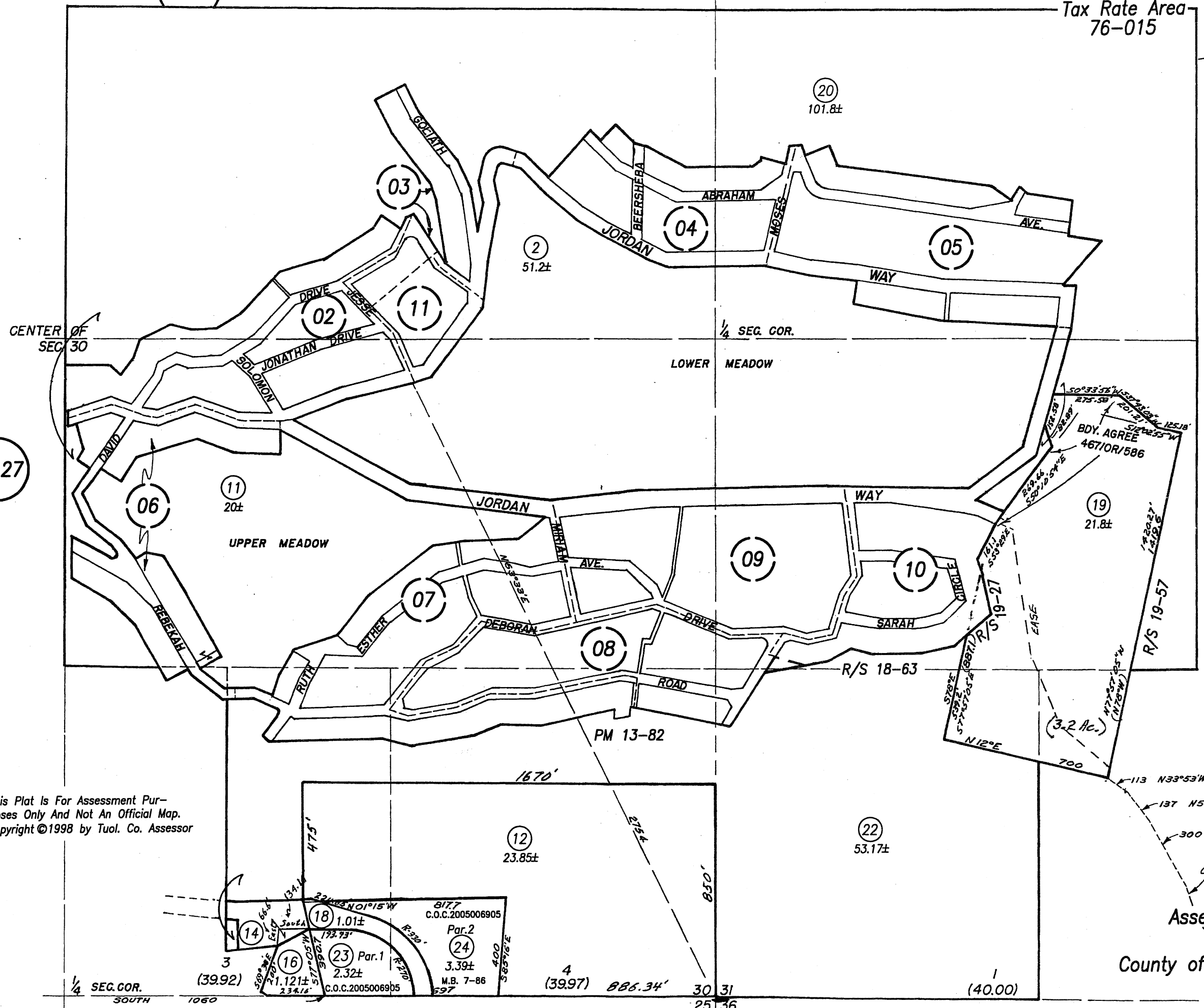
Assessor's Map  
31-01  
County of Tuolumne, Calif.  
1949

24

REVISION DATE  
1/12/2010

Bk.27

Note: This Plat Is For Assessment Pur-  
poses Only And Not An Official Map.  
Copyright ©1998 by Tuol. Co. Assessor



1/4 SEG. COR.  
SOUTH

3  
(39.92)

8177  
C.O.C.2005006905  
Par.2  
24  
3.39±  
M.B. 7-86  
597

18 1.01±  
C.O.C.2005006905  
Par.1  
23 2.32±  
1.121±  
234.16

4  
(39.97)

886.34'

30 31  
25 36

1  
(40.00)

1/4 SEG. COR.