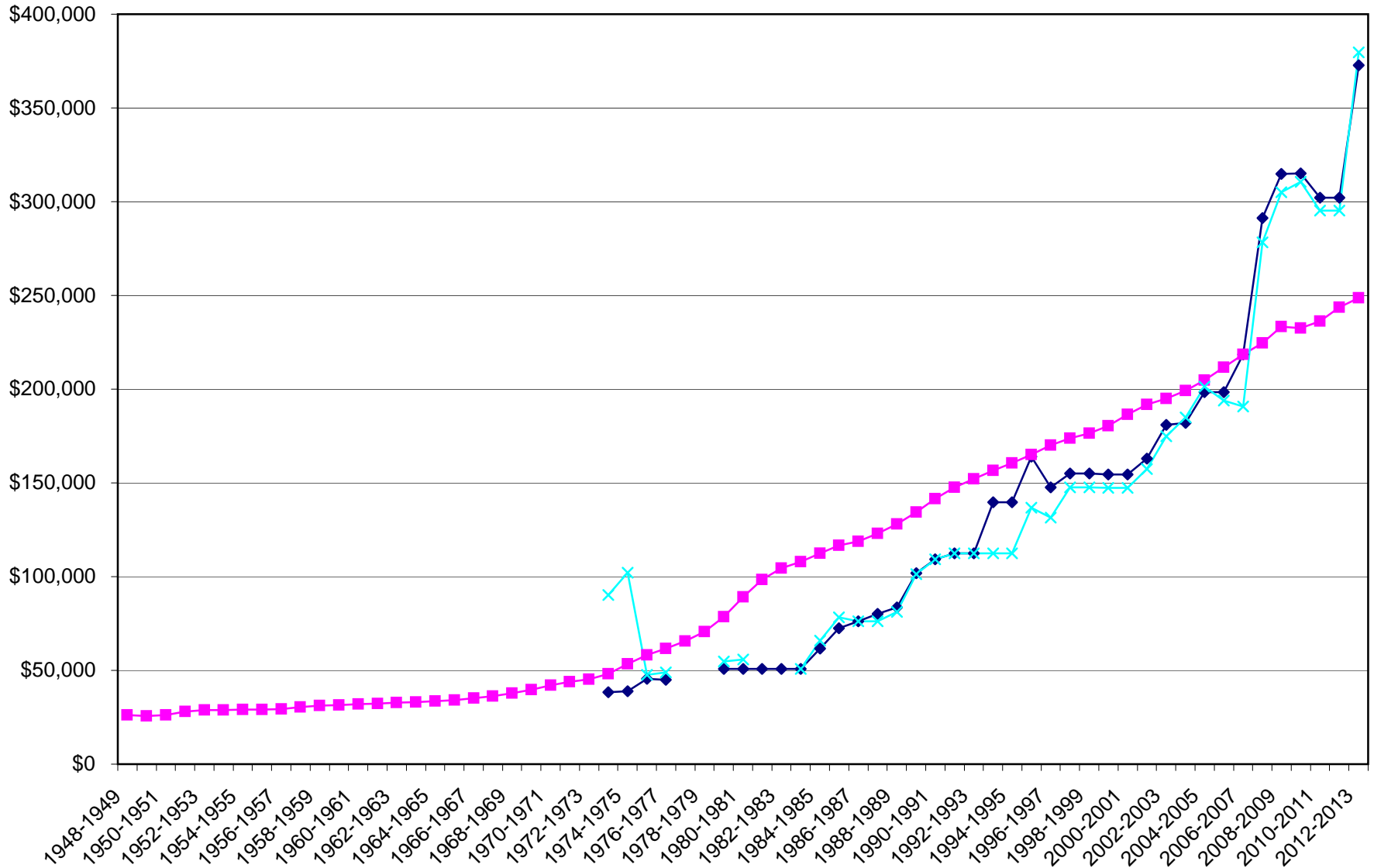
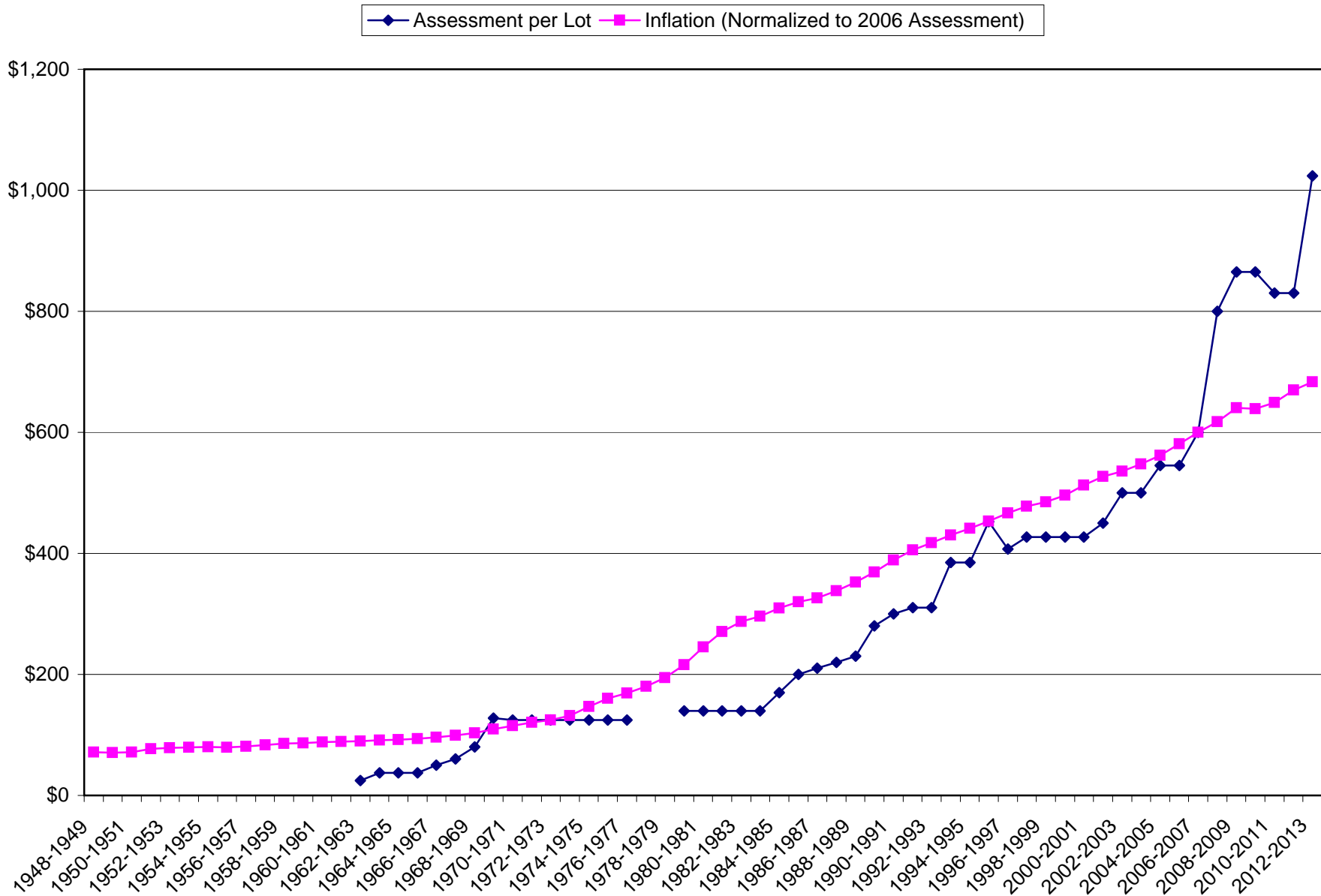
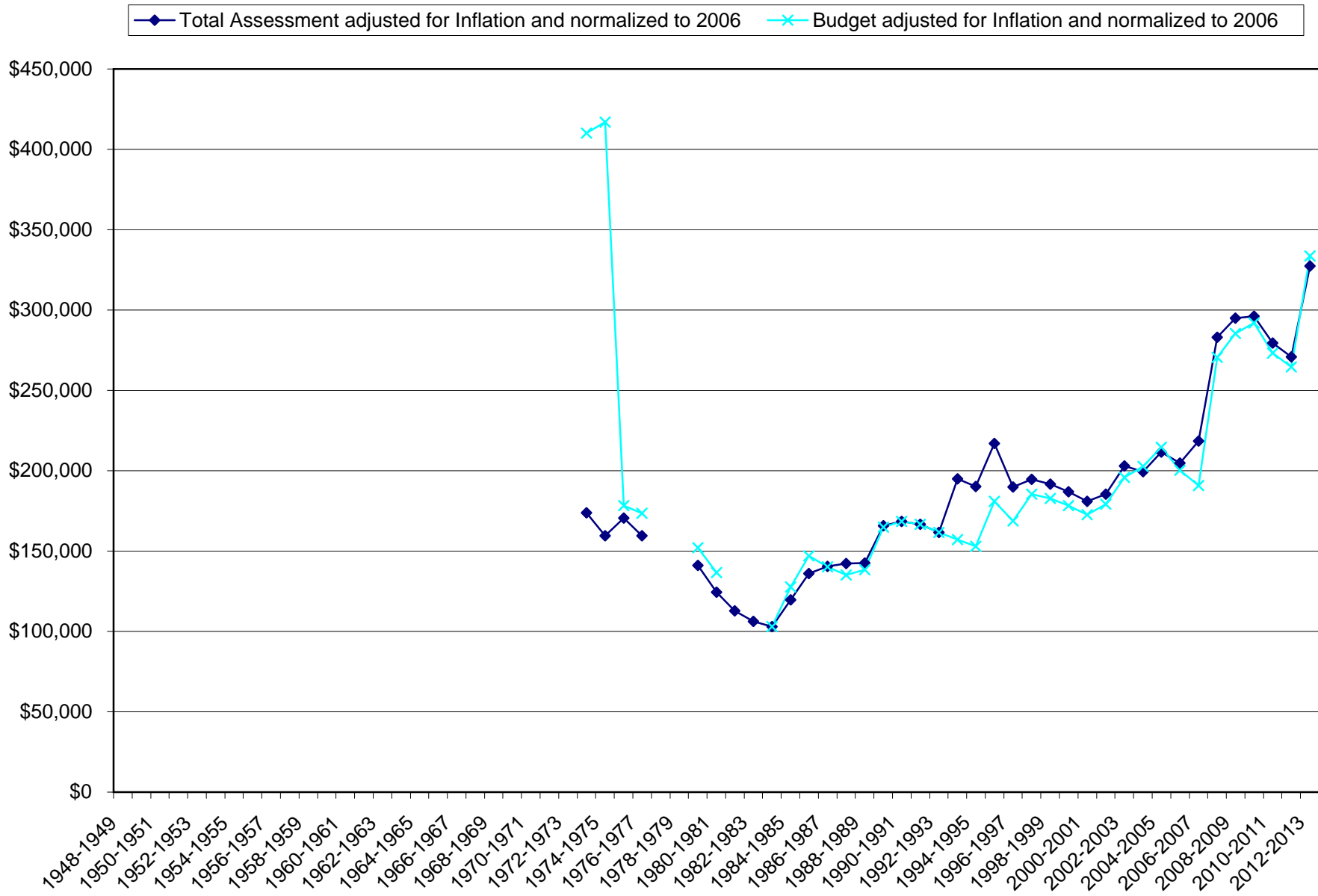


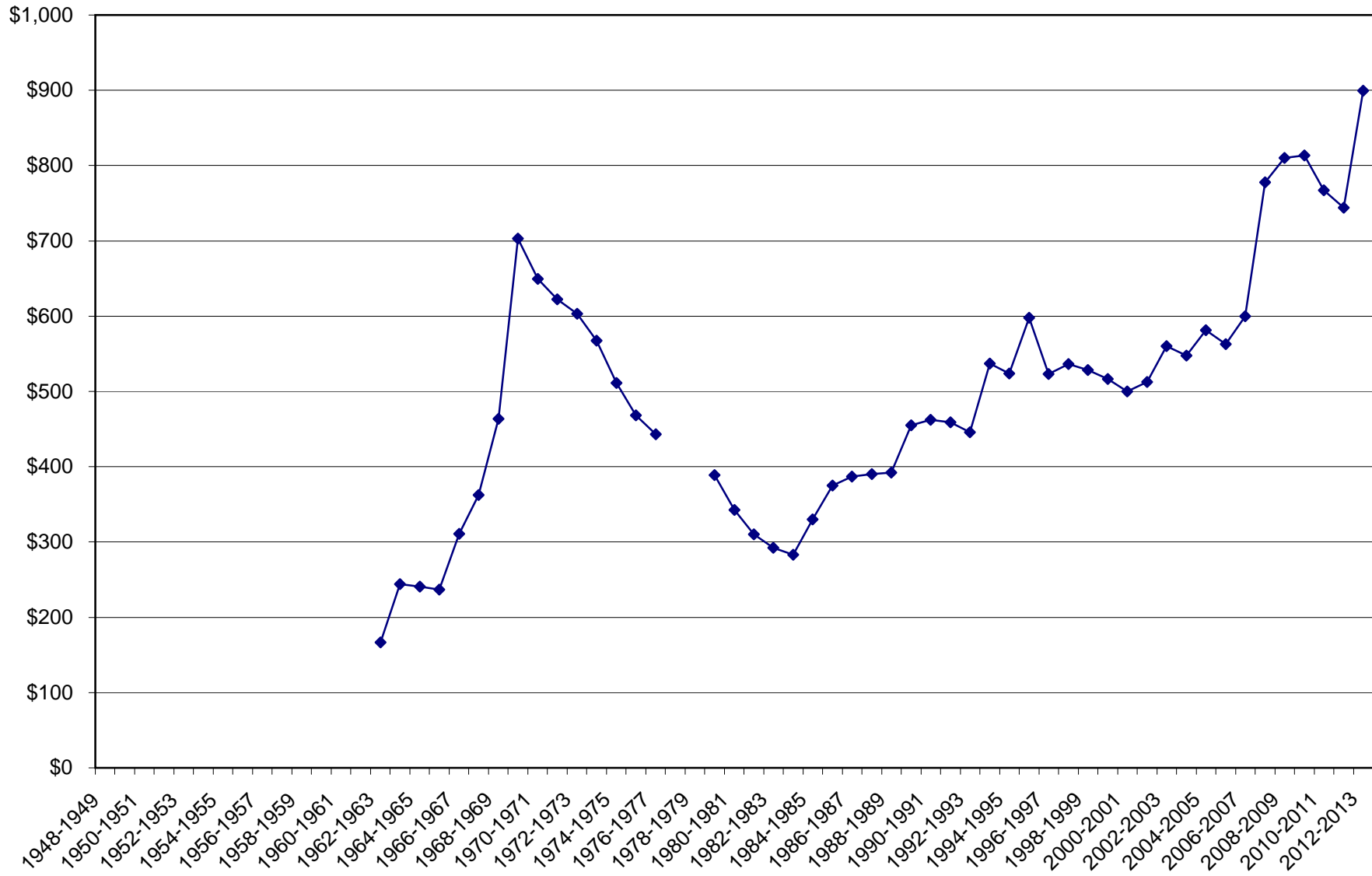
◆ Total Assessment ■ Inflation Normalized to 2006 Total Assessment ✕ Budget

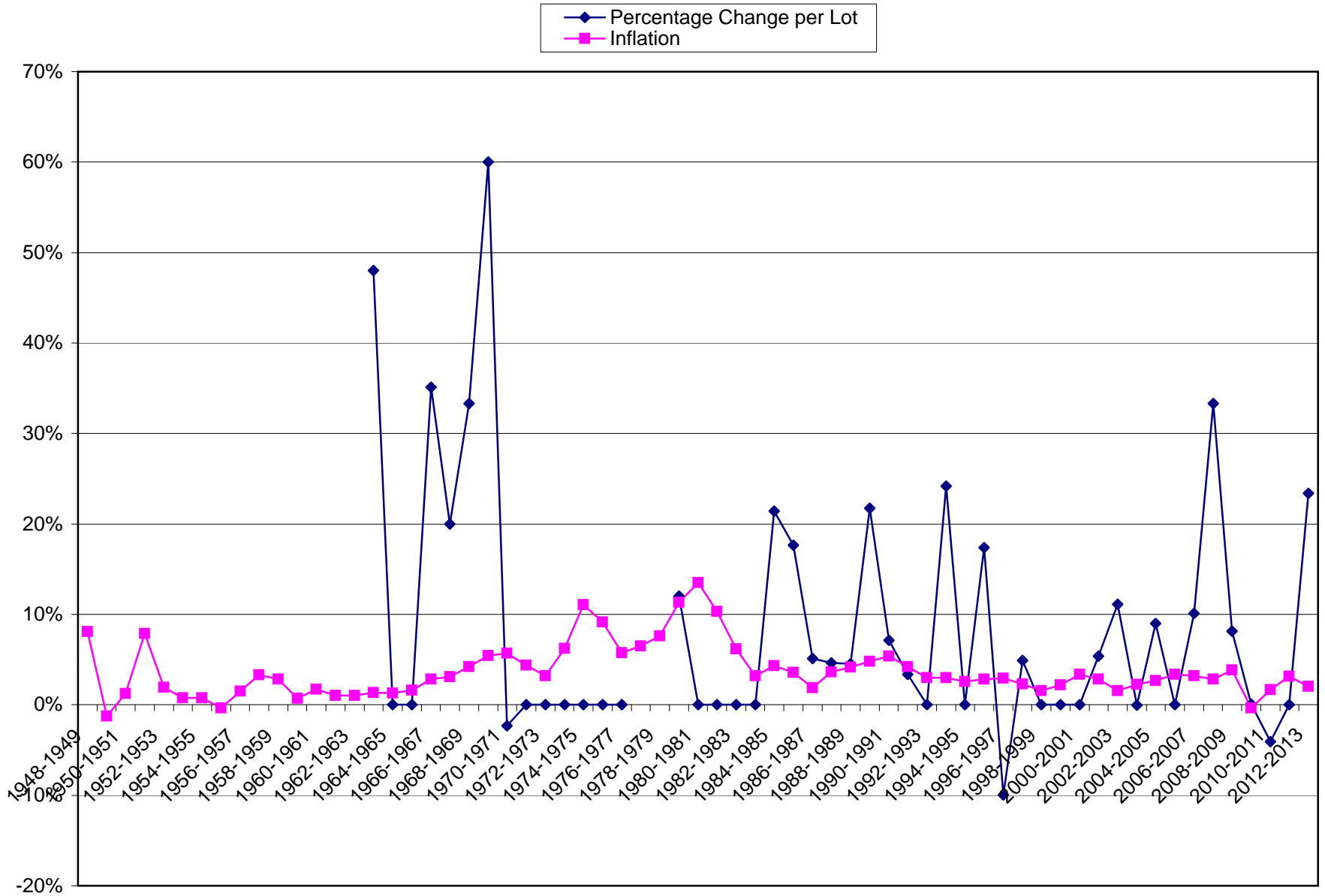






Assessment per Lot, Adjusted for Inflation and Normalized to 2006





Period	Budget	Treasurer	President	Assessment	Assess. Per Lot	Assess. Increase	Lots	Notes
1948-1949								
1949-1950								
1950-1951								
1951-1952								
1952-1953								
1953-1954								
1954-1955								
1955-1956								
1956-1957								
1957-1958								
1958-1959								
1959-1960								
1960-1961								
1961-1962								
1962-1963					\$25			
1963-1964					\$37	48%		
1964-1965					\$37	0%		
1965-1966					\$37	0%		
1966-1967					\$50	35%		
1967-1968					\$60	20%		
1968-1969					\$80	33%		
1969-1970					\$128	60%		
1970-1971					\$125	-2%		
1971-1972					\$125	0%		
1972-1973					\$125	0%		Road Construction
1973-1974	\$90,300			\$38,250	\$125	0%	306	Lot Sales, Road & Water Construction
1974-1975	\$102,000			\$39,000	\$125	0%	312	Lot Sales, Road & Water Construction
1975-1976	\$47,600			\$45,500	\$125	0%	364	
1976-1977	\$49,000			\$45,000	\$125	0%	360	
1977-1978								
1978-1979								
1979-1980	\$54,820			\$50,820	\$140	12%	363	
1980-1981	\$55,800			\$50,820	\$140	0%	363	
1981-1982				\$50,820	\$140	0%	363	

Period	Budget	Treasurer	President	Assessment	Assess. Per Lot	Assess. Increase	Lots	Notes
1982-1983				\$50,820	\$140	0%	363	
1983-1984	\$50,820			\$50,820	\$140	0%	363	
1984-1985	\$65,800			\$61,710	\$170	21%	363	
1985-1986	\$78,400			\$72,600	\$200	18%	363	
1986-1987	\$76,230			\$76,320	\$210	5%	363	
1987-1988	\$76,076			\$80,080	\$220	5%	364	OFSHA = \$10
1988-1989	\$81,208			\$83,720	\$230	5%	364	OFSHA = \$10
1989-1990	\$101,418			\$101,920	\$280	22%	364	OFSHA = \$12
1990-1991	\$109,168			\$109,168	\$300	7%	364	OFSHA = \$12
1991-1992	\$112,530			\$112,530	\$310	3%	363	
1992-1993	\$112,530			\$112,530	\$310	0%	363	
1993-1994	\$112,530			\$139,755	\$385	24%	363	Water = \$25, Snow Plow \$50
1994-1995	\$112,530			\$139,755	\$385	0%	363	Water = \$25, Snow Plow \$50
1995-1996	\$136,851			\$164,076	\$452	17%	363	Water = \$25, Snow Plow \$50
1996-1997	\$131,406			\$147,741	\$407	-10%	363	Water Tank = \$30, Gate = \$20 per lot
1997-1998	\$147,700			\$155,001	\$427	5%	363	Gate = \$20 per lot
1998-1999	\$147,741			\$155,001	\$427	0%	363	Gate = \$20 per lot
1999-2000	\$147,334	Richard Bonner	Del Wallis	\$154,574	\$427	0%	362	Reserve = \$20
2000-2001	\$147,334	Richard Bonner	Del Wallis	\$154,574	\$427	0%	362	Reserve = \$20
2001-2002	\$157,450	Richard Bonner	Del Wallis	\$162,900	\$450	5%	362	Reserve = \$20
2002-2003	\$174,810	Richard Bonner	Del Wallis	\$181,020	\$500	11%	362	Water = \$25, Reserve = \$20
2003-2004	\$184,820	Richard Bonner	Fred Coleman	\$182,000	\$500	0%	364	Reserve = \$20
2004-2005	\$201,200	Roger Townsend	Mike Rainwater	\$198,380	\$545	9%	364	Reserve = \$20
2005-2006	\$193,920	Doris Selman	Roger Townsend	\$198,380	\$545	0%	364	Water = \$20, Play Ground = \$20
2006-2007	\$190,720	Doris Selman	Charles Varvayanis	\$218,400	\$600	10%	364	Water = \$45, Ply Gnd = \$20, Needle = \$30
2007-2008	\$278,190	Mike Rainwater	Mike Rainwater	\$291,200	\$800	33%	364	Water = \$45, Play Ground = \$20
2008-2009	\$304,965	Paul Emery	Jesse Worsham	\$314,860	\$865	8%	364	Water = \$45, Play Ground = \$20
2009-2010	\$310,598	Shaun Velayas	Jesse Worsham	\$315,013	\$865	0%	364	Water = \$45, Play Ground = \$2
2010-2011	\$295,362	Shaun Velayas	Gloria Harvey	\$302,120	\$830	-4%	364	Water = \$45
2011-2012	\$295,362	Del Wallis	Shaun Velayas	\$302,120	\$830	0%	364	Water = \$45
2012-2013	\$379,636	Bill Ordwein	Del Wallis	\$372,736	\$1,024	23%	364	