

**Odd Fellows Sierra Homeowners' Association, Inc.**

P. O. Box 116, Long Barn, CA 95335-0116  
e-mail: [sierrapark@sierrapark.org](mailto:sierrapark@sierrapark.org)  
Phone: (209) 586-3098

Dear Philip,

September 4, 2010

Odd Fellows Sierra Park would like to invite Comcast to market Cable Services to our community.

Odd Fellows Sierra Park is a Gated community of 300 dwellings situated in the foothills of the Sierra Mountain Range at 4,500 feet altitude in Tuolumne County, CA, on Highway 108, 1.3 miles East of Sierra Village. The typical lot size is 1/6 of an acre and yields between 40 and 50 residential structures passed per cable mile. Utilities are distributed aerially within Odd Fellows Sierra Park.

Currently the majority of our residents receive television programming and Internet service via Direct Broadcast Satellite (DBS). Due to dense forest and mountainous terrain, DBS service is unreliable for many of our residents and unavailable to others. Also, due to our altitude, snow fall frequently interrupts DBS services in the winter.

Many of our residents have expressed interest in receiving Comcast Cable Services. We are aware that Internet and telephone service are not yet available in our vicinity from Comcast.

We have developed a survey to assist both Comcast and ourselves assess the potential market. It will be distributed to our residents along with our newsletter this week. A copy of the survey is attached.

Comcast Currently services the nearby community of Sierra Village. It is 1.2 miles from the last utility pole with Comcast cable to the point on Highway 108 where the PG&E pole line crosses Highway 108 at the Lakeview Drive Subdivision then travels an additional 0.3 miles to a point on Rebekah Road where PG&E and AT&T enter Odd Fellow Sierra Park. In this scenario, Comcast would pass an additional 30 homes in the Lakeview Drive subdivision. See the attached map. PG&E and AT&T utility poles exist along the possible cable route.

We look forward to establishing a dialog.

Sincerely,

Board of Directors  
Odd Fellows Sierra Homeowner's Association

# Television, Internet, and Telephone Survey

The Odd Fellows Sierra Homeowner's Association (OFSHA) Board of Directors is assessing the possibility of attracting Comcast to Odd Fellows Sierra Park. To that end, the OFSHA BOD would like to know how you currently receive Television, Telephone, and Internet services and your interest in receiving services from Comcast if available. Comcast currently services the nearby community of Sierra Village with Television programming only.

Please provide your name and street address in Odd Fellows Sierra Park:

Name: \_\_\_\_\_

Street Address: \_\_\_\_\_

Mailing Address (Optional): \_\_\_\_\_

\_\_\_\_\_

Phone Numbers (Optional): \_\_\_\_\_

\_\_\_\_\_

**Television Programming** – Do you currently have the following in Odd Fellows Sierra Park? Please check all that apply.

- DirecTV (Satellite)
- Dish Network (Satellite)
- Sierra Nevada Communications (Cable)
- Off the air (Antenna)
- DVD and/or Blu-ray player/recorder
- VCR player/recorder
- Other – Please Specify: \_\_\_\_\_

**Internet Access** – Do you currently have the following in Odd Fellows Sierra Park? Please check all that apply.

- HughesNet (Satellite)
- WildBlue (Satellite)
- StarBand (Satellite)
- Dial-up
- ISDN
- T1
- Other – Please Specify: \_\_\_\_\_

**Telephone service** – Do you currently have the following in Odd Fellows Sierra Park? Please check all that apply.

- Land Line – AT&T
- Land Line – AT&T (Second line or more)
- Cell Phone

**Comcast** – If available would you purchase the following services from Comcast in Odd Fellow Sierra Park? Please check all that apply.

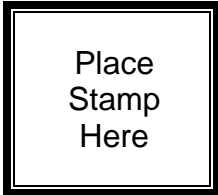
- Television Programming
- Internet Access
- Telephone Service

Please fold and mail completed forms to the address on other side or e-mail responses to [sierrapark@sierrapark.org](mailto:sierrapark@sierrapark.org)

---

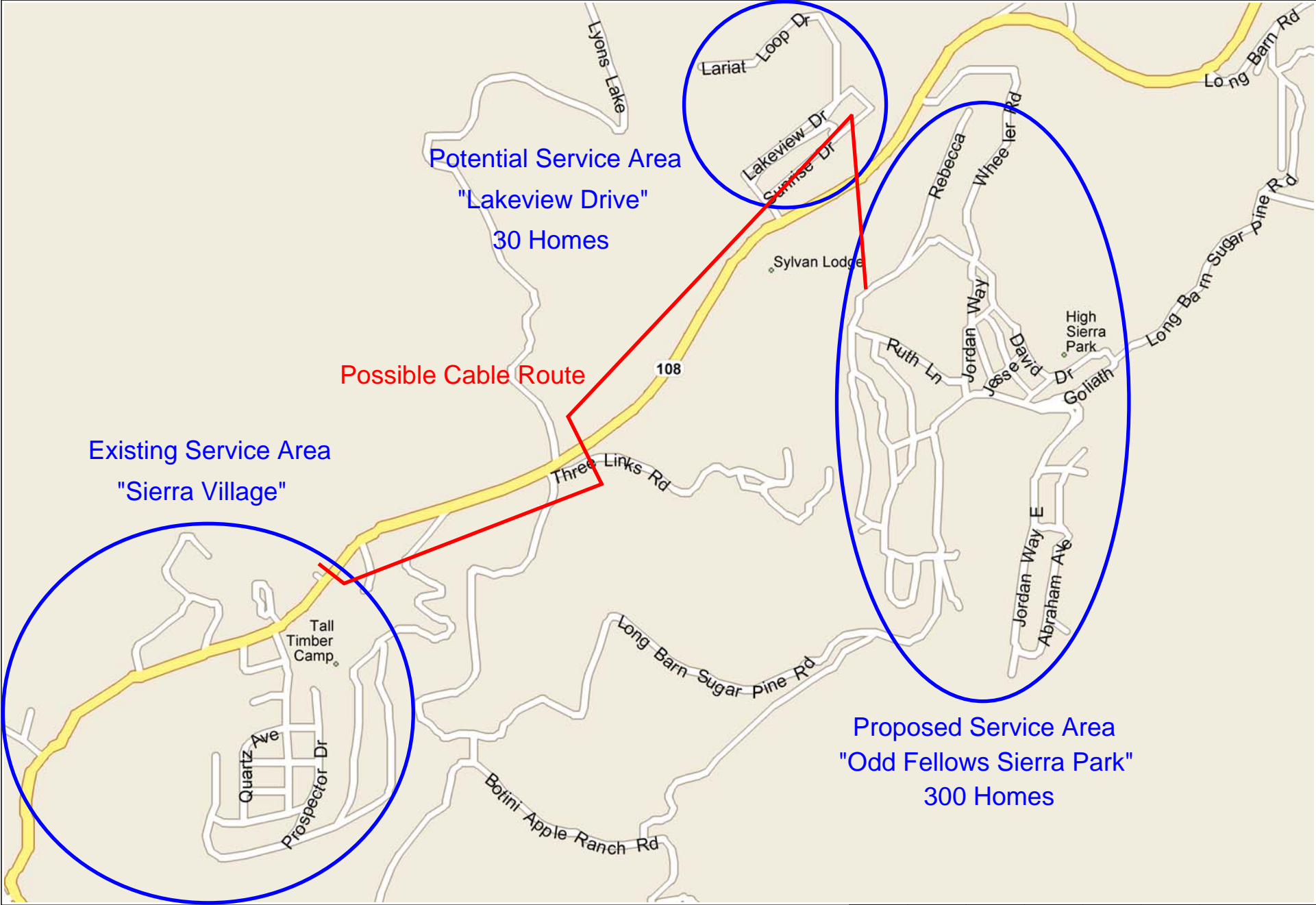
---

---



Odd Fellows Sierra Homeowner's Association  
P.O. 116  
Long Barn, CA 95335-0116

California, United States, North America



0 mi 0.2 0.4 0.6 0.8